

THE EXCHANGE



St Mary's
University
Twickenham
London

SPRING
2026



Opposite
Twickenham Station

exchangetwickenham.co.uk
020 8240 2399

WELCOME

To the new season at The Exchange!

Welcome to 2026! We've got a lot in store at The Exchange so let's get started.....

We're excited to be hosting yet another strong programme of family friendly events this season across theatre, film, music and comedy (see page 16) as well as several community events with local partners such as Richmond Music Trust, Westway School of Performing Arts and Coram Shakespeare Schools Festival.

We continue to build on our programme of screened experiences spanning the genres of theatre, exhibitions, concerts and feature films which, along with the Richmond Film Society's wonderful world cinema programme, offer you the best seat in the house at a VERY reasonable price indeed.

March sees the return of our annual celebration of **International Women's Day** all month long, do turn to page 12 - 15 to peruse our eclectic mixture of events celebrating female creativity.

Plus, we're delighted to be continuing to support and grow new work, firstly by opening our doors to our new **Artist in Residence**, the actor and writer Paterson Joseph (**Peep Show**, **Wonka**) who will be devising new work for the stage which you will have the opportunity to experience here first. We're also excited to be launching a new play-reading series, **First Draft**, that will showcase new writing for the stage (see page 12). The scheme will be run by professional creatives and you, dear discerning audience member, will have the chance to feedback and interrogate the creative process at each post-show Q&A.

We're thrilled to be hosting two warm-up gigs for the amazing **Squeeze** (yes, the real Squeeze) who return for the fourth time to The Exchange, to kick start their latest album and tour. Sign up to **Squeeze's** mailing list to be given the chance to hear them play up close and personal at our venue this spring (dates to be announced). Furthermore, the income that we receive from these and other high-profile gigs coming up will go towards a new scheme – **The Exchange Sessions** – that will give young up-and-coming bands the chance to perform at our amazing venue. Sign up to our newsletter for more info.

You'll also be given the chance to contribute towards all of our schemes for emerging talent by donating at QR codes located around our building or when booking tickets. And talking of booking tickets, we have coined a new motto: *"It'll cost you more if you pay on the door"*. The reason for introducing a £3 levy on tickets paid for on the night is to incentivise you to **please book in advance**: this ensures that we don't have to cancel shows due to poor sales, and means that you will be supporting not just us but all those incredible creatives out there, upon which we rely for our happiness and wellbeing.

So, thanks as always for your unerring support, and see you soon!

Becky Shaw
Programme & Partnerships Manager



Did you know that hundreds of venues close every year?

You can help keep our wonderful venue alive by purchasing tickets in advance, buying a drink at our bar, volunteering with us, or by donating using this QR code below.

Thank you for your support!



BOX OFFICE

Open: Monday - Thursday 9 am - 5 pm
Friday 10 am - 4 pm

Call Us: 020 8240 2399

Find Us: 75 London Rd, Twickenham
TW1 1BE

Visit: exchangetwickenham.co.uk

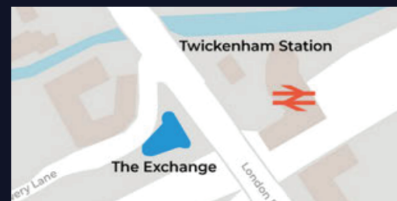
@exchangetwickenham

@ExchangeTwick

The venue and the Box Office open one hour before the scheduled start time for evening events.

Online bookings can be made through our website 24/7. For online bookings the ticketing company (TicketSource) charge 7% of the ticket price with a 50p minimum charge. There is no booking fee when you contact our Box Office directly.

GETTING TO THE VENUE



The Exchange cannot accommodate parking for audience members and there is no parking on the Brewery Wharf estate. There are limited parking spaces near the venue for Blue Badge holders. There are public car parks in Twickenham within walking distance of the venue. We encourage audience members to travel by public transport when possible. We are located directly opposite Twickenham railway station and bus routes 267, 281 and H22 pass outside the venue.

CONCESSIONS

Concessions are indicated where available. We offer concessions to children under the age of 16, adults aged 60+, students in full-time education, St Mary's University staff, those on income support and registered disabled. Proof of status must be shown when booking or collecting tickets.

REFUNDS

The Exchange regrets it is unable to refund tickets unless the performance is postponed or cancelled.

ACCESSIBILITY

The Exchange is committed to making the venue accessible to everyone so they can enjoy the whole programme. For accessible seating advice, please call our Box Office prior to your visit so we can accommodate your needs.

There are limited parking spaces near the venue for Blue Badge holders.

We have step free access from the street to the Box Office/ground floor of the building. The Exchange has lift access to all levels of the building. Accessible toilets are on the ground level, 2nd and 4th floors. In the theatre Row J is step free, the aisle seats are J4, 5, 23, 24.

ARTIST IN RESIDENCE

Paterson Joseph

We are delighted to announce our new artist in residence, **Paterson Joseph**. Paterson is the acclaimed actor (*Peep Show*, *Vigil*, *Wonka*) and writer of the award-winning book, *The Secret Diaries of Charles Ignatius Sancho*. He will be here to devise and develop new and existing projects, using our wonderful spaces as a laboratory for creativity.

"I love The Exchange for its constant desire to house and support new and innovative work..."

The opportunity to become Artist-In-Residence at The Exchange Theatre, Twickenham is one of the most exciting things to happen to me in a long career of creating work. I love The Exchange for its constant desire to house and support new and innovative work at a time when most theatres are focused, understandably, on simply existing.

The current climate of risk-averse theatre is not the ideal platform for the kind of experimental and rewarding research and development that true artistry needs, outside the demands of the 'business' arm of show business. A kind of laboratory for creativity is being established here at The Exchange, and I am certain that many of my creative colleagues will be knocking on the door to join me.

Watch this space, as I collaborate with my long-time co-creators Ben Park and Fin Walker as we add to our 'Exchange-Birthed' show *Sancho&Me - For One Night Only* and take on two new projects for development. A musical version of my new children's book of short stories from Global African History *Ten Children Who Changed The World* and Fin Walker's new work *The Lady & A Bird*.

With The Exchange as our nursery, we're confident these two ideas in embryo will have a long and exciting life ahead.

Paterson Joseph

COMING SOON

THEATRE

THE LADY & A BIRD

Over a three month period Artist in Residence actor/writer Paterson Joseph, composer Ben Park, and director/choreographer Fin Walker will be exploring 'The Lady & A Bird', a research project synthesising movement, text, live music and design to eventually create a solo for a female/male/non-binary performer.

Delving in to the idea of 'given' identity and the reality of the human soul, drawing on shared cultural experiences to create a factual/fictional story of hope and magic. Different guest actors will be invited into the research throughout the residency.



At work in the studio, Artist in Residence actor/writer Paterson Joseph, composer Ben Park, and director/choreographer Fin Walker.



FILM

THE WORLD OF HANS ZIMMER

A New Dimension (2025)

Friday 16 January | 2 pm & 7 pm | £12 | Running time: 2h 20m

The music of the Oscar winner conquers the big screen. This concert in Krakow displays the entire spectrum of Hans Zimmer's work, where he makes an exclusive guest appearance. The orchestra invites the audience into Zimmer's world of unforgettable soundscapes that have made cinematic history. New arrangements of his masterpieces from Dune: Part Two, The Lion King, Gladiator, Interstellar, and many other hit movies are staged in an energetic, visually stunning setting.



MUSIC

UNCOVERED

The Electric Rock Experience

Friday 23 January | 8 pm | £20 - £25

Duran Duran's Dom Brown's virtuoso group are back to blast away the January blues. Expect a stellar show of songs by artists such as Led Zeppelin, Pink Floyd, Jimi Hendrix, Prince, David Bowie, The Who, Rolling Stones, Tina Turner, Aretha Franklin, AC/DC and The Beatles. Whilst staying true to the original vibe, these incredible musicians stamp their own interpretation and style onto a select choice of rock classics.



MUSIC

ELVIS

The Ultimate Experience

Saturday 24 January | 7:30 pm | £28.50

Multi-award winning, Ben Thompson brings the iconic soundtrack of the Elvis years to life, on stage like never before. Experience what it would've been like to witness The King of Rock 'n' Roll live in the flesh. Although no one will ever replace Elvis Presley, Ben (crowned 2018 World Ultimate Elvis Tribute Artist Champion of Graceland) has been commended by many who worked with Elvis himself and was even chosen to portray Elvis in the blockbuster movie *Bladerunner 2049*.



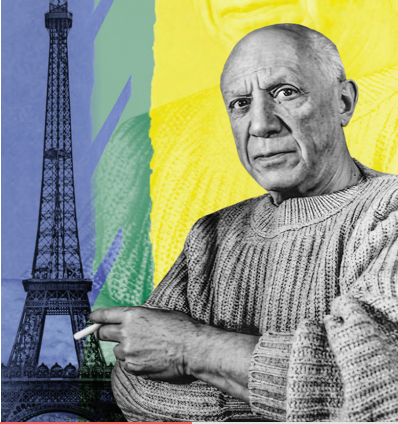
MUSIC

DUSTY UNPLUGGED

Janette Mason & Jo Harrop

Friday 30 January | 7:30 pm | £25

Renowned pianist and arranger Janette Mason, who was recently nominated for Parliamentary Jazz Instrumentalist of the Year and whose credits include Oasis and Pulp, has teamed up with award-winning recording artist and songwriter Jo Harrop to perform an intimate evening of acoustic covers highlighting Dusty Springfield's phenomenal career. They are joined by bassist Simon Little (The Divine Comedy). This show lays bare the sheer beauty of the lyrics and music highlighting Dusty's genius.



FILM

PICASSO

A Rebel in Paris (2025)

Saturday 31 January | 2 pm & 7 pm | £10 - £12 | Running time: 1h 30m

The film focuses on the story of a young immigrant, poor but destined to become one of the most important icons of the 20th century. Following Picasso through the Parisian neighbourhoods where he lived, from the early days in ateliers with no heating to the large middle-class apartments where his success began: a physical and intellectual journey to gain a deeper understanding of his work and spirit.

FILM

SILENTS SYNCED

R.E.M. X Buster Keaton's Sherlock Jr.

Thursday 5 February | 7 pm | £10 - £12 | Running time: 1h 14m

Silents Synced pairs classic silent movies with epic rock music. In this version Buster Keaton's 1924 comedy classic is reimaged with R.E.M.'s alt-rock masterpieces, *Monster* (1994) and *New Adventures in Hi-Fi* (1996). For movie lovers and rock music fans alike!

MUSIC

SOUNDS OF THE SIXTIES

Starring The Revolvers

Friday 13 February | 7:30 pm | £23.50 - £25

A two-hour theatrical phenomenon featuring the best songs from the most creative musical decade of all time. From the clothes to the instruments, *The Sounds of the Sixties* provides the most authentic Sixties experience touring today. Featuring favourite hits from – The Beatles, The Kinks, The Rolling Stones, The Who, Spencer Davis Group, Simon and Garfunkel, and many more!

MUSIC

FLOWERS & FRIENDSHIP BRACELETS

The Ultimate Pop Concert!

Saturday 14 February | 6 pm | £27.50

Come and join us for the ultimate pop concert and celebrate the biggest hits from the hottest artists of the moment. Let's 'Shake it Off' to our very own Taylor Swift. Sing along to 'Flowers' with Miley Cyrus. And, HOT TO GO! dust off all your best dance moves with special guest Chappell Roan!



MARCH



COMMUNITY

RICHMOND MUSIC TRUST SCHOOLS ENSEMBLE

Richmond Music Trust

Thursday 26 February | £8

Richmond Music Trust presents a showcase of musical talent from across the borough's schools. This community event brings together young musicians for an afternoon of collaborative performance.

THEATRE

WHEN VINCENT MET JOHN

Friday 27 February | 7:30 pm | £18 - £20

Vincent Van Gogh died in 1890, John Lennon died in 1980, both of gunshot wounds. Imagine what might have happened had the two greatest artists of their time met? This hypothetical meeting between singer, songwriter and peace activist, John Lennon and post-impressionist painter Vincent Van Gogh is the premise of a new play, by actor and writer Nick Wilkes, inspired by the profound changes both men went through five years before their respective deaths.

COMEDY

BRING YOUR OWN BABY COMEDY

Wednesday 4 March | 12 pm | £13

Join us for an afternoon of hilarious comedy, where you can relax and have a good laugh at the best comedians in the UK, without needing childcare! There's buggy parking, baby changing and more, so that you can take some time for yourself and just be entertained. The bar is fully stocked, whether you fancy a cuppa or even something a bit stronger (G&T anyone?).

FILM

OTHELLO

Theatre on Screen

Wednesday 4 March | 3 pm & 7 pm | £10 - £12

Running time: 2h 45m (with interval)

At the Theatre Royal Haymarket Shakespeare's *Othello* rages to life in an explosive new production starring David Harewood OBE and Toby Jones OBE. Directed by Tony Award-winner Tom Morris OBE with music by PJ Harvey, this epic story of manipulation, jealousy and toxic masculinity explores the darker side of power and desire. *Othello* is a GCSE and A-Level set text and we encourage bookings of school screenings.



COMMUNITY

CORAM SHAKESPEARE SCHOOLS FESTIVAL

Thursday 5 March & Thursday 12 March | 7 pm | £10 - £12 (Group rate £8)

Coram Shakespeare Schools Foundation is proud to present the world's largest youth drama festival at The Exchange. See Shakespeare's timeless stories brought to life and support young people from your local community as they take to the stage in a unique evening of live theatre.

FILM

TURNER & CONSTABLE

Exhibition On Screen

Wednesday 11 March | 2:30 pm (Captioned) & 7 pm | £10 - £12

Running time: 1h 30m

Marking 250 years since their births, this landmark exhibition explores Turner and Constable's intertwined lives and legacies. Discover unexpected sides to both artists alongside intimate insights seen through sketchbooks and personal items.

COMMUNITY

ARTS RICHMOND YOUNG WRITERS FESTIVAL

Sunday 15 March | 2 pm | Free

Gala Awards event, where shortlisted young writers from the London Borough of Richmond upon Thames see their poems and stories performed by young actors and receive prizes, with entries judged in age groups and published in an anthology.

ON THE DOOR WILL COST YOU MORE!

Don't forget the on the door ticket price will cost you £3 more.
Book ahead to save ££s!

Online at exchangetwickenham.co.uk, in-person or over the phone on 020 8240 2399.

TOP TIP! To avoid booking fees, book in-person or on the phone.



BOOK NOW!



THEATRE

ST MARY'S UNIVERSITY FESTIVAL OF CREATIVITY

SANCHO & ME, For One Night Only

Saturday 21 March | 7.30 pm | £16.05

Sancho Productions Ltd Presents, Paterson Joseph with Composer Ben Park. Introducing a remarkable Black British hero, Charles Ignatius Sancho - born in slavery yet achieved greatness. See how Sancho and Paterson's personal stories blend over 300 years of Black British History.

This show is being held at St Mary's University.

FILM

ST MARY'S UNIVERSITY FESTIVAL OF CREATIVITY

Film Festival

Thursday 26 March | 2 pm | Free

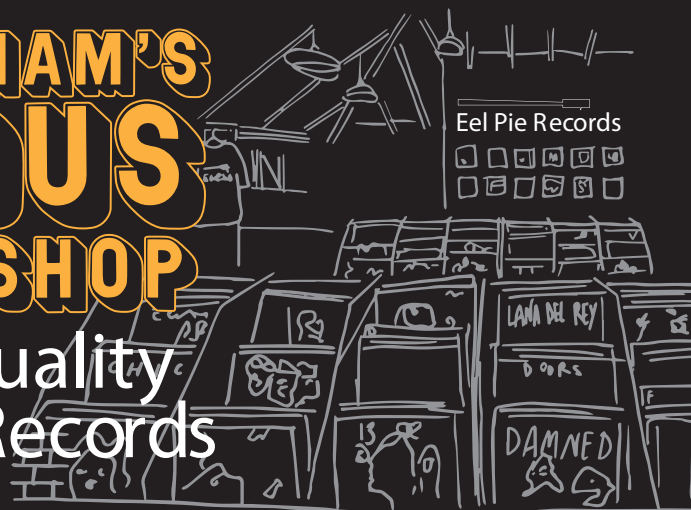
Opening with a screening of *Tony*, the acclaimed debut feature film by the director and visiting St Mary's lecturer Gerard Johnson. Gritty, unsettling, and darkly compelling, the film celebrates bold and distinctive filmmaking. Followed by a Q&A with Gerard Johnson and a showcase of short films created by students and staff, highlighting emerging talent and creative voices from the university community.

EEL PIE RECORDS

44-45 Church Street, Twickenham www.eelpierecords.com

TWICKENHAM'S FAMOUS RECORD SHOP

New and Quality
2nd Hand Records



SQUEEZE

50 Years and Counting!



We are delighted to be hosting two exclusive warm-up shows this spring, ahead of Squeeze's upcoming new album tour.

For information about dates and how to book tickets, please sign up to their mailing list at:

www.squeezeofficial.com

THE EXCHANGE



THEATRE PLAY READING

SHAKESPEARE'S WOMEN

By Lorien Haynes

Friday 20 March | 7:30 pm | £12

Fundraiser for Refuge. Pay what you like, minimum of £12

Following on from two sold out readings, starring Tamsin Greig, at Shakespeare's Globe last year, we are delighted to be hosting a reading of this play by Lorien Haynes.

This dark comedy transports eight of Shakespeare's women from the 16th century to the modern day, placing them in the same domestic abuse support group. Centuries have passed but little has changed as they come together to eat biscuits and talk. The play gradually exposes each woman's darkest secrets and asks, what would happen if these protagonists survived their men and traditional narratives, to become flesh and blood today?

In support of Refuge, the company and Director Jude Kelly shine a light into areas of domestic abuse.

The play reading will be followed by a Q&A with Jude, Lorien and company members with a representative from Refuge.

Launch play for the First Draft series, see intro.



Empower and celebrate at The Exchange this March. A month dedicated to women's voices and talent. From captivating theatre productions to thought-provoking films and music, experience a diverse line-up that honours the extraordinary achievements of women.



For more information about upcoming events visit:
exchangetwickenham.co.uk/womens-day-festival

TALK

HOW TO FACE BIG CHANGE AND COME BACK STRONGER

Helen Thorn

Saturday 28 March | 7.30 pm | £10

Join Helen Thorn, bestselling author and one half of the comedy duo Scummy Mummies, with a panel of experts and inspiring women for a lively chat around the themes in her new book, *How to Face Big Change and Come Back Stronger*.

The speakers will cover several topics from coping with loss and grief, to how we can go from surviving to thriving, how exercise can heal you, how do we find love again and the many ways we can start to rebuild after big life changes. There will be lots of laughs, and maybe a few tears.

A night of uplifting, funny and empowering stories from women who have rebuilt their lives after loss.

Post talk Q&A and a book signing will follow the event.

Confirmed speakers:

Dr Rachel Master, Clinical Psychologist

Emma Campbell, author, speaker and podcaster

Karen Arthur, author, artist, menopause diversity campaigner and broadcaster

How to face big change and come back stronger
HELEN THORN



Dr Rachel Master



Emma Campbell



Karen Arthur





COMEDY

GAME OF CRONES

A&E Comedy Presents

Friday 6 March | 7:30 pm | £16 - £18

Sharpen your swords and fill your goblets—the dragons have returned to slay the beast of midlife with fearless buffoonery! Funny, feral, and gloriously unapologetic, *Game of Crones* is a riotous celebration of women in their prime - warriors who will not go gentle into bingo night!

"I think they are amazing!!" – Phoebe Waller-Bridge



FILM

CARRIE (1976)

50th Anniversary Screening - 4k Version

Friday 13 March | 7 pm | £10 | Running time: 1h 38m

It's been 50 years since this horror classic was theatrically released in the US. Based on the novel by prolific horror writer Stephen King, and directed by Brian De Palma, this is the story of Carrie White, a troubled young girl, bullied by her peers and daughter to a fanatical fundamentalist mother, who discovers she has telekinetic powers.



FILM

LILITH FAIR

Building a Mystery (2025)

Saturday 14 March | 7 pm | £10 - £12 | Running time: 1h 35m

A beautifully curated and relevant documentary following the creation and effects of the Lilith Fair festival in the late 90s. How Sarah McLachlan and her team created a time-defining experience that encapsulates womanhood, queer coming-of-age, and community of all kinds.



FILM

MATERIALISTS (2025)

Baby Cinema - Films for grown-ups with babies

19 March | 12 pm | £5 | Running time: 1h 57m

Failed actress turned successful matchmaker Lucy Mason works at Adore, a matchmaking company in New York City. An "eternal bachelorette," she maintains she will either die alone or marry someone wealthy. Despite her professional success, Lucy grows frustrated with her clients' increasingly unrealistic standards.



MUSIC

SLADY

The World's Only All Female Slade Tribute Band

Friday 27 March | 7:30 pm | £20

Join Gobby Holder, Davina Hill, Donna Powell and Jem Lea as they take ya bak 'ome to those 1970s glam rock days with all them crazee anthems! Mama Weer All Crazee Now, Gudbye T'Jane, Skweeze Me Pleeze Me, Cos I Luv You and of course for those festive winter nites, Merry Xmas Everybody!! And many, many more...



MUSIC

REBECCA WHEATLEY

A Woman's Touch

Sunday 29 March | 5 pm | £20

Rebecca Wheatley brings her unique blend of storytelling and song to The Exchange for an intimate afternoon performance. Having sung professionally for nearly 40 years from jazz dives to The Albert Hall, her warm gusto propels her through an eclectic repertoire from Billie Holiday, Bob Dylan, Janis Ian and pop classics with a twist. It's tender, frank, funny – and for everybody!

FAMILY EVENTS



COMEDY

COMEDY CLUB 4 KIDS

Sunday 8 February | 2:30 pm | £10 - £14 (Family ticket £40)

It's a comedy club, right, but for kids. Also for any adults who enjoy a swear-free hour with the international circuit's best stand-ups and sketch acts. Non-patronising. Pure awesome. Since 2005, Comedy Club 4 Kids has been getting the best stand-up and sketch acts to do their thing for an audience of children (aged 6+) and their families... but without the rude bits!



MUSIC

FLOWERS & FRIENDSHIP BRACELETS

Saturday 14 February | 6 pm | £27.50

Come and join us for the ultimate pop concert and celebrate the biggest hits from the hottest artists of the moment. Let's 'Shake it Off' to our very own Taylor Swift; sing along to 'Flowers' with Miley Cyrus; dust off all our best dance moves, and HOT TO GO! special guest announcement, Chappell Roan. 6+.



THEATRE

OUT OF THE BOX

Monday 16 February | 11 am | £12 (Family ticket £40)

A family-friendly circus comedy show, which sees an unlikely character bring audiences together through joyful awe. With every opening of the box comes new trick shots, mini acts, and hilarious opportunities for participation. Delivered through non-verbal clowning, ordinary objects become extraordinary



FAMILY FILM CLUB

GROW (2025) (PG)

Wednesday 18 February | 2 pm | £5 | Running time: 1h 47m

A heartwarming tale set in the pumpkin capital of the world as they prepare for the fiercest competition the town has ever seen where the real prize is joy, laughter, and family. *Grow* has just been nominated for the BAFTA Best Children's and Family Film Award 2026.



THEATRE

HOW TO SURVIVE IN SPACE

Friday 20 February | 11 am & 2 pm | £15 (Family ticket £50)

Featuring CBBC's *Operation Ouch!* presenters, Dr Dan and Dr Raph, this high-energy live science theatre production is designed to spark curiosity and excitement about STEM. Through storytelling, demonstrations, and striking visuals, families explore how the human body survives in extreme environments, including space, and how science helps to solve real-world problems.



FAMILY FILM CLUB

GABBY'S DOLLHOUSE: THE MOVIE (2025) (U)

Saturday 28 March | 11 am | £5 | Running time: 1h 38m

Gabby heads out on a road trip with her Grandma Gigi to the urban wonderland of Cat Francisco. But when Gabby's dollhouse, her most prized possession, ends up in the hands of an eccentric cat lady named Vera (Oscar nominee Kristen Wiig), Gabby sets off on an adventure through the real world to get the Gabby Cats back together and save the dollhouse. Popcorn and ice cream will be served!



LIGHTS, CAMERA, BIRTHDAY!

NEW! Birthday Cafe

Why not book a family show for a birthday treat and have the after party (or pre) in our Birthday Cafe? Hot dogs, popcorn and drinks will be served!

EMAIL

exchangetwickenham@stmarys.ac.uk
for more information.



National Theatre Live

Bringing National Theatre Live recorded performances to the heart of Twickenham. See them here first!

COMING SOON..



THE FIFTH STEP

Saturday 17 January | 7 pm | £15 - £18 | Running time: 2h 10m (with interval)

Olivier Award-winner Jack Lowden (*Slow Horses*, *Dunkirk*) and Emmy and BAFTA winner Martin Freeman (*The Hobbit*, *The Responder*) star in David Ireland's critically acclaimed new play. Why not see *The Fifth Step* as part of the Dry January Challenge and grab a coffee for this hit comedy play!



HAMLET

Thursday 22 January | 2 pm (Captioned) & 7 pm | £15 - £18
Running time: 3h (with interval)

Olivier Award-winner Hiran Abeysekera (*Life of Pi*) is Hamlet in this fearless, contemporary take on Shakespeare's famous tragedy. Trapped between duty and doubt, surrounded by power and privilege, young Prince Hamlet dares to ask the ultimate question – you know the one.



THE AUDIENCE

Thursday 26 February | 7 pm | Saturday 28 February | 2 pm (Captioned) & 7 pm
£15 - £18 | Running time: 3h (with interval)

Returning to cinemas for the first time in over a decade, Helen Mirren plays Queen Elizabeth II in the Olivier and Tony Award-winning hit production, directed by Stephen Daldry. For 60 years, Queen Elizabeth II met with each of her 12 prime ministers in a private weekly meeting. Through this meeting, known as *The Audience*, we see glimpses of the woman behind the crown and witness moments that shaped a monarch.



COMING SOON..



ALL MY SONS

Thursday 23 April | 2 pm (Captioned) & 7 pm | £15 - £18
Running time: 2h 10m (with interval)

Bryan Cranston (*Breaking Bad*) and Marianne Jean-Baptiste (*Hard Truths*) feature in a five-star, triumphantly acclaimed new production of Arthur Miller's classic play, from visionary director Ivo Van Hove (*A View from the Bridge*). One family, the heart of the American dream. When wartime delivers profits for Joe, it comes at a price when his partner is charged with criminal manufacturing deals, and his eldest son goes missing in action. Will peacetime bring peace of mind, or will he be confronted by the consequence of his actions?



THE PLAYBOY OF THE WESTERN WORLD

Thursday 28 May | 2 pm (Captioned) & 7 pm | £15 - £18
Running time: 2h 30m (with interval)

Nicola Coughlan (*Bridgerton*) joins Éanna Hardwicke (*The Sixth Commandment*) and Siobhán McSweeney (*Derry Girls*) in John Millington Synge's riveting play of youth and self-discovery. Pegeen Flaherty's life is turned upside down when a young man walks into her pub claiming that he's killed his father. Instead of being shunned, the killer becomes a local hero and begins to win hearts, that is until a second man unexpectedly arrives on the scene...



LES LIAISONS DANGEREUSES

Thursday 25 June | 2 pm (Captioned) & 7 pm | £15 - £18
Running time: 2h 30m (with interval)

BAFTA Award-winner Lesley Manville (*Phantom Thread*) joins Aidan Turner (*Rivals*) in a striking new staging of Christopher Hampton's celebrated adaptation of the classic novel, where among the glittering salons of the super-rich, one misstep can mean ruin. Marquise de Merteuil is a master in the art of survival. Alongside the magnetic Vicomte de Valmont, they turn seduction into strategy and weaponise desire. But when their alliance collapses into rivalry, the battle between them threatens to destroy everyone in their path.



RICHMOND FILM SOCIETY

Richmond Film Society was formed in 1963 and has since screened around 900 films. Its objective was, and remains, to bring our community the very best in World Cinema. The seasons run from September to June and attract an aggregate audience of just over 5000. Season 62 will comprise 20 films of international repute, including features from Europe, the Middle East, East Asia, South Asia, South America, USA and UK. Non-member tickets £5 (£3 full-time students).

For further information on RFS and the programme of films, see <http://www.richmondfilmsoc.org.uk>.

THIS SEASON

HARD TRUTHS (UK)

13 January | 8 pm | Running time: 1h 37m
After period pieces Mr Turner (2014) and Peterloo (2018), Mike Leigh returns to contemporary drama in Hard Truths. Widely praised as a powerful, hard-hitting portrait of conflict in an Afro-Caribbean British family, the film blends raw emotion with dark humour.

NEXT SOHEE (SOUTH KOREA)

27 January | 8 pm | Running time: 2h 18m
Next Sohee is a powerful, insightful and intelligent critique of South Korean work culture, which lifts the lid off the corporate pressure cooker of call centres. The film paints a sombre picture of a society where each institution - schools, education authorities, employment departments, employers, police, and families - appear to operate with impunity, creating a labyrinth of excuses that ultimately dismiss the gravity of an employees' plight.

INVESTIGATION OF A CITIZEN ABOVE SUSPICION (ITALY)

10 February | 8 pm | Running time: 1h 55m
RFS' World Cinema Classic for Season 62 is Investigation of a Citizen Above Suspicion, is a 1970 Italian satirical crime thriller directed by Elio Petri, starring Gian Maria Volonté and Florinda Bolkan. It is a psychological, black-humoured satire on corruption in high office, telling the story of a top police officer who kills his mistress and then tests whether the police would charge him for this crime.

GREEN BORDER (POLAND)

24 February | 8 pm | Running time: 2h 32m
In early 2021, Belarusian dictator, Alexander Lukashenko sought to provoke Europe and retaliate for sanctions by luring refugees to the Belarus/Polish border by falsely promising them easy passage into the EU. Ruthlessly turned back by the Polish border guards, the refugees became pawns in a brutal geopolitical and humanitarian crisis and struggled to survive in freezing conditions. system and a darkening national political situation, the two respond in contrasting ways.

THE GOLDMAN CASE (FRANCE)

10 March | 8 pm | Running time: 1h 55m
Based on a true story and set in 1975 Paris, The Goldman Case is a reconstruction of the appeal hearing of Jewish far-left activist Pierre Goldman. Sentenced to life imprisonment for four armed robberies, one of which resulted in the death of two women, Goldman proudly admitted to the robberies but vehemently maintained his innocence to the charges of murders.

COTTONTAIL (JAPAN)

24 March | 8 pm | Running time: 1h 34m
A widower from Japan travels with his estranged son's family to England in order to fulfil his late wife's dying wish - to disperse her cremated remains in the place she loved the most, England's Lake District. So begins a journey to a far land, a journey which is sad, tragic, redemptive and comedic in turn.



THE JOBSWORTH PROJECT

THE EXCHANGE



DO YOU HAVE A STORY TO TELL?

We want to collect 65 real life stories from local residents who are 65 years of age or over.

We are looking for stories from lived moments in a working life, maybe significant, maybe not...either way, everybody has a story to tell about a job they have had, whether comic, tragic or somewhere in between. No previous experience in writing is necessary just the desire to tell a story from any period of your working life. Your story can be up to 1000 words.

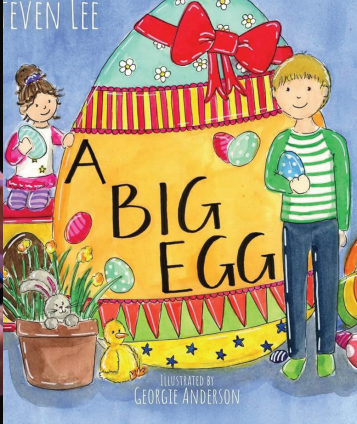
We plan to showcase all 65 chosen stories across a live Jobsworth Project Day next year, and together with you, some stories will be developed to become the basis for an original staged production with music at The Exchange Twickenham.

We look forward to hearing from you!

WAYS TO SEND YOUR STORY

- The Jobsworth Project, The Exchange, 75 London Road, Twickenham, TW1 1BE
- exchangetwickenham@stmarys.ac.uk
- At The Exchange Box Office
Mon - Thurs 9 am - 5 pm, Fri 10 am - 4 pm

Michael Vale - Director, The Jobsworth Project www.michaelvale.co.uk
Becky Shaw - Programme & Partnerships Manager



Sophie Long Embroidery



Core Mama Fitness



COMING SOON...

THE ZOO THAT COMES TO YOU

Wednesday 1 April | 11 am & 2 pm | £12 (Family ticket £40)
Two animal enthusiasts who have accidentally ended up with a sanctuary, but no visitors, decide to bring the zoo to you! Featuring puppetry, live music and playful characters. Ages 5+

A BIG EGG

Friday 10 April | 2 pm | £12, (Family ticket £40)
Filled with laughter, puppetry and all your favourite sing-along songs, *A Big Egg* is a heart-warming Easter treat for the whole family. A joyful celebration of curiosity, love and the magic of storytelling. Ages 2 - 8+

DOORMAN

15, 16 & 17 April | 7:30 pm | £10 - £12
The writer Geoff Thompson worked 'on the door' himself for nine years at some of the toughest nightclubs in the UK before becoming an award-winning author, playwright and screenwriter. His one-man play explores the personal struggle and painful contradictions of being "a decent man trapped in a dark trade". Directed by Michael Vale and performed by Andy Hough. Followed by a Q&A.

THE KATE BUSH EXPERIENCE

Friday 8 May | 7:30 pm | £18 - £20
A rare chance to see the songs of Kate Bush performed live as they would've been by Kate herself.

THE ALEX VOYSEY BLUES BAND PRESENT 'BEST OF THE BLUES'

Saturday 16 May | 7:30 pm | £18 - £20
Experience one of the most exciting and emerging artists on the UK Blues scene known for his exhilarating and virtuosic blues rock performances.

EXHIBITION ON SCREEN: FRIDA KAHLO

Wednesday 20 May | 2:30 pm (Captioned) & 7 pm
This award-winning film, taking an in-depth look at arguably the world's favourite female artist, is back in cinemas, one month before the Tate exhibition opens, allowing audiences to watch both the film and see the show.

COMMUNITY CLASSES

WELLBEING & FITNESS

Core Mama Pilates
Monday 7:45 pm - 8:45 pm
coremamafitness@gmail.com

Nina McKellar Pilates
Tuesday 9:30 am - 10:30 am
Instagram - @mckellarnina

Busylizzy Richmond & Twickenham
Tuesday 6:45 pm - 7:45 pm
busylizzy.co.uk/richmond

Himalayan Hatha Yoga with Dillaro
Wednesday 7 pm - 8 pm
dillaro yoga.com

CREATIVE ARTS FOR ADULTS

Sophie Long Embroidery
Thursday 10 am - 1 pm
sophielongembroidery.wordpress.com

CDARS Group
Thursday: Neurodiversity Group
1:30 pm - 3 pm
Thursday: Young Persons Group
3:15 pm - 4:30 pm
info@cdars.org.uk

YOUNG PEOPLES WORKSHOPS

Hummingbird School of Dance
Pre-school ballet
Monday 9:15 am
principal@hummingbirddance.co.uk

Twickenham Youth Theatre
Monday 4:30 pm
Ages 11 - 16
twickenhamyt@gmail.com

Elizabeth Samuels Drama School
Tuesday 3:45 pm
Ages 5 - 18
https://www.elizabethsamuelsdrama.com

WestWay School of Performing Arts
Thursday 5 pm & Saturday 9 am
Ages 3 - 18
enquiries@westwayperformingarts.co.uk

White Rabbit Drama Club
Wednesday 3:45 pm
Ages 5 - 8
whiterabbitdramaclub@gmail.com

Headway Tutors
Maths: Wednesday 4:30 pm - 5:30 pm
English: Wednesday 5:30 pm - 6:30 pm
info@headwaytutors.co.uk

RMT Choir
Thursday 4:30 pm
Year 4 - Year 13
admin@richmondmusictrust.org.uk

SMU E-sports Arena



Ready to compete against your friends in Valorant, crush a speedrun, or build your streaming empire?

You've just found your new HQ. Nestled in the heart of the St Mary's University campus in Twickenham, the Esports Arena is the space for competitive gamers, casual button-mashers, and aspiring content creators. Our cutting-edge PCs, pro-level peripherals, and stream-ready setups are ready to power your next level.

centers.ggcircuit.com/stmarys/home

IMPORTANT

The hourly rate is £7, a weekday 4-hour pass is £19.60 and a weekend 16-hour pass is £72. St Mary's students will pay £5 per hour, £14 for a weekday pass and £50 for a weekend pass.



St Mary's
University
London
Short Courses

Discover your local hub for Short Courses



Enhance your skills and gain practical knowledge with our wide range of courses including counselling, massage, reflexology, languages and more.



stmarys.ac.uk/short-courses
020 8240 4321
shortcourses@stmarys.ac.uk



WE'RE HIRING!

- Tech Supervisor (Permanent)
- Tech Casuals

We are hiring for a permanent Tech Supervisor and Tech Casuals to deliver our wonderful programme of events.

Interested? Email exchangetwickenham@stmarys.ac.uk for more information.

DON'T MISS OUT ON ANYTHING

Join our email newsletter!

Sign up to our email newsletter, using the QR code, to receive regular updates about what's coming up!



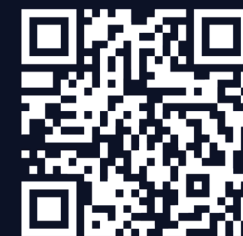
SCAN HERE



TELL US WHAT YOU WANT, WHAT YOU REALLY, REALLY WANT!

As we approach 10 years, we would love to know how we are doing and what you would like to see more of at our lovely venue. The feedback of our supporters is important to us, and we hope that you can spare a few minutes to answer a short survey to help us bring more of what you enjoy to The Exchange.

As a thank you for your time, we will offer you a chance to win a pair of tickets to a show of your choice.



Scan here, or visit:
exchangetwickenham.co.uk/feedback

VENUE HIRE

Alongside our main theatre we have six community spaces which can be hired either on an ad-hoc basis for meetings and events or more of a regular weekly hire for classes and workshops. Each of these spaces are bright and welcoming with views across Twickenham.

To enquire please write to us:
 exchangetwickenham@stmarys.ac.uk



THEATRE SEATING MAP

				P	1	2		3	4	5	6	7	8	9	10	11	12	13	14	15	16	17	18		P			
				N				1	2	3	4	5	6	7	8	9	10	11	12	13	14				N			
				M				1	2	3	4	5	6	7	8	9	10	11	12	13	14				M			
				L				1	2	3	4	5	6	7	8	9	10	11	12	13	14				L			
				K				1	2	3	4	5	6	7	8	9	10	11	12	13	14				K			
🦿	2	🦿	4	J	5	6	7	8	9	10	11	12	13	14	15	16	17	18	19	20	21	22	23	J	24	25	26	27
1	2	3	4	H	5	6	7	8	9	10	11	12	13	14	15	16	17	18	19	20	21	22	23	H	24	25	26	27
	1	2	3	G	4	5	6	7	8	9	10	11	12	13	14	15	16	17	18	19	20	21	22	G	23	24	25	
		1	2	F	4	5	6	7	8	9	10	11	12	13	14	15	16	17	18	19	20	21	22	F	23	24	25	
			1	E	3	4	5	6	7	8	9	10	11	12	13	14	15	16	17	18	19	20	21	E	22	23		
			1	D	3	4	5	6	7	8	9	10	11	12	13	14	15	16	17	18	19	20	21	D	22	23		
				1	C	2	3	4	5	6	7	8	9	10	11	12	13	14	15	16	17	18	19	20	C	21		
				1	B	2	3	4	5	6	7	8	9	10	11	12	13	14	15	16	17	18	19	20	B	21		
				A	1	2	3	4	5	6	7	8	9	10	11	12	13	14	15	16	17	18	19	A				

STAGE



VOLUNTEER USHERS NEEDED

Gain experience | Get FREE tickets

We are looking for a friendly team of volunteers who can assist with the smooth running of our events. We house an eclectic mix of shows so it is always exciting at our venue.

If this is something you'd like to be a part of please email us at:
 exchangetwickenham@stmarys.ac.uk



A Community for mums building businesses

Connection, learning and support for mums who are starting and growing their own business - without doing it alone.



Tracey Butcher, Founder



@foundermums



www.foundermums.co.uk



foundermums@gmail.com

Sign up for news



What you'll find:

- Supportive community
- Lunch and learns
- Meaningful networking
- Wellbeing sessions
- Accountability
- In person & online events
- FM Directory Listing
- Local Walk and Talks

BAR MENU

The Bar is open for our gigs, events, and shows.

Standard and Veggie Hot Dogs
 £4.50

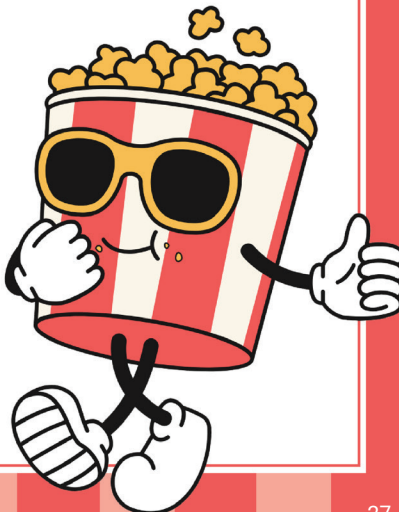
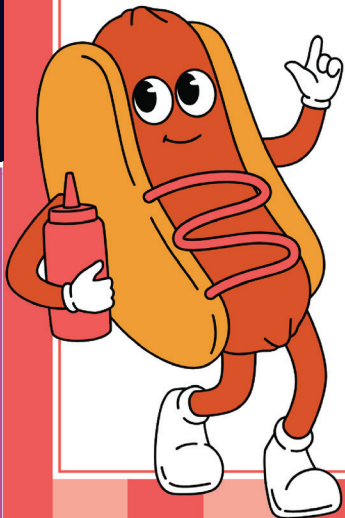
Kid's Hot Dogs
 £3.50

Meal Deal

Standard/Veggie hot dog and drink (soft or alcoholic)
 combo £10
 Kid's hot dog and soft drink
 combo £5

Family Events

Popcorn and a soft drink
 combo £5.50



Tue Jan 13	RFS – Hard Truths (UK)	FILM
Fri Jan 16	The World Of Hans Zimmer	FILM
Sat Jan 17	NT Live: The Fifth Step	FILM
Thu Jan 22	NT Live: Hamlet	FILM
Fri Jan 23	Uncovered – The Electric Rock Experience	MUSIC
Sat Jan 24	Elvis – The Ultimate Experience	MUSIC
Tue Jan 27	RFS - Next Sohee (South Korea)	FILM
Fri Jan 30	Dusty Unplugged	MUSIC
Sat Jan 31	Picasso: A Rebel In Paris	FILM
Thu Feb 5	Silents Synced – R.E.M. X Buster Keaton's Sherlock Jr.	FILM
Sun Feb 8	Comedy Club 4 Kids	FAMILY
Tue Feb 10	RFS – Investigation Of A Citizen Above Suspicion (Italy)	FILM
Fri Feb 13	Sounds of the Sixties starring The Revolvers	MUSIC
Sat Feb 14	Flowers & Friendship Bracelets	MUSIC
Mon Feb 16	Out Of The Box	FAMILY
Wed Feb 18	Grow (2025)	FAMILY FILM
Fri Feb 20	How To Survive In Space	FAMILY
Tue Feb 24	RFS - Green Border (Poland)	FILM
Thu Feb 26	RMT Schools Ensemble	COMMUNITY
Thu Feb 26	NT Live: The Audience	FILM
Fri Feb 27	When Vincent Met John	THEATRE
Sat Feb 28	NT Live: The Audience	FILM
Wed Mar 4	BYOB Comedy	COMEDY
Wed Mar 4	Othello Theatre Royal Haymarket	FILM
Thu Mar 5	Coram Shakespeare Schools Festival	COMMUNITY
Fri Mar 6	Game Of Crones – A&E Comedy	COMEDY
Sun 8 & Mon 9	Squeeze	MUSIC
Tue Mar 10	RFS - The Goldman Case (France)	FILM
Wed Mar 11	Exhibition On Screen: Turner & Constable	FILM
Thu Mar 12	Coram Shakespeare School Festival	COMMUNITY
Fri Mar 13	Carrie 50th Anniversary Screening	FILM
Sat Mar 14	Lilith Fair: Building A Mystery	FILM
Sun Mar 15	Arts Richmond Young Writers Festival	COMMUNITY
Thu Mar 19	Baby Cinema – Materialists (2025)	FILM
Fri Mar 20	Play-Reading: Shakespeare's Women By Lorien Haynes	THEATRE
Sat Mar 21	SMU Festival of Creativity: SANCHO & ME - For One Night Only	THEATRE
Tue Mar 24	RFS – Cottontail (Japan)	FILM
Thu Mar 26	SMU Festival Of Creativity Film Festival	FILM
Fri Mar 27	Slady	MUSIC
Sat Feb 28	Family Film Club – Gabby's Dollhouse: The Movie	FILM
Sat Mar 28	Helen Thorn – How To Face Big Change And Come Back Stronger	TALK
Sun Mar 29	Rebecca Wheatley: A Woman's Touch	MUSIC